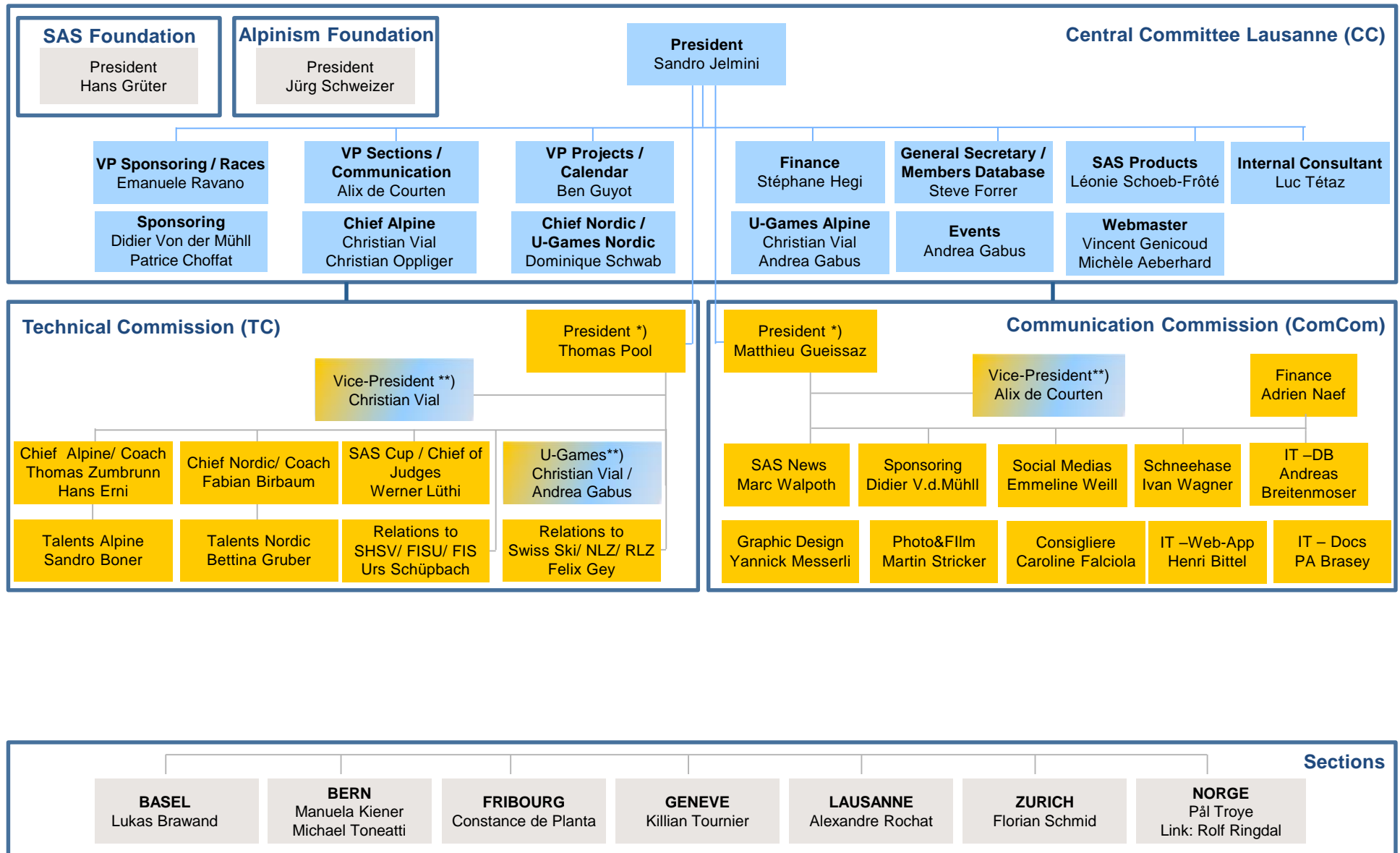




# Structure of SAS with CC, Foundations, Commissions and Sections



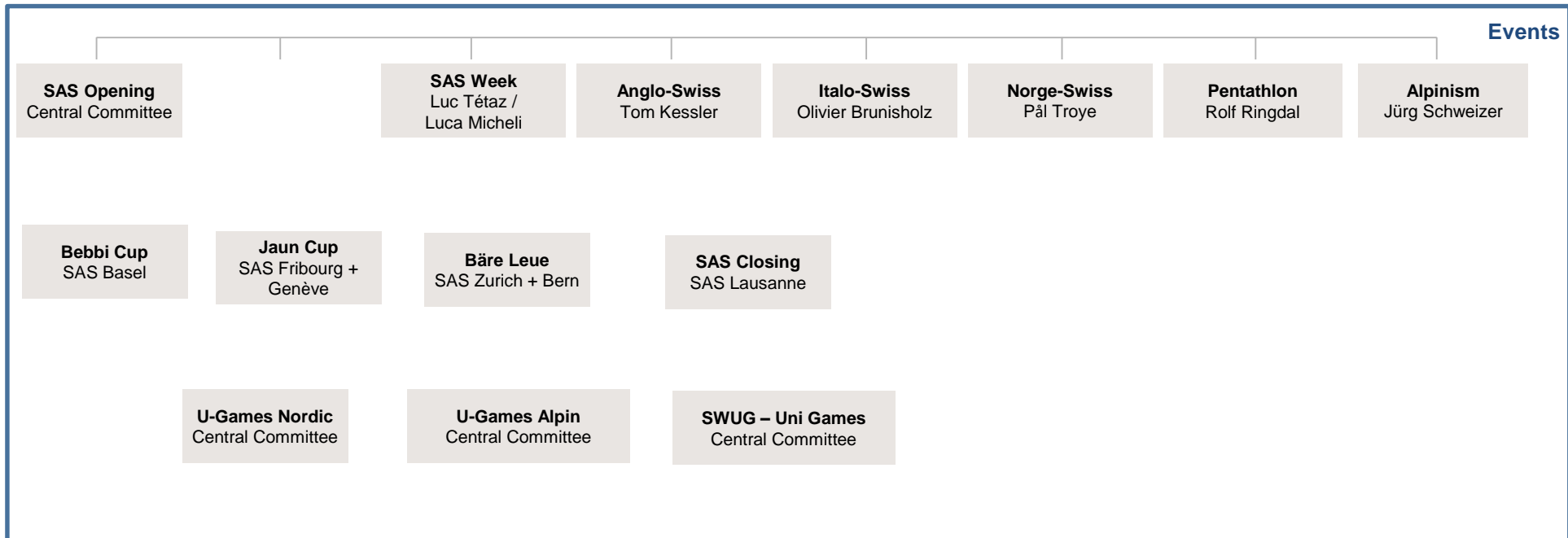
Central Committee - changes every 3 years
  "Permanent roles" - position holders keep functions at least 6-8 years, changes when necessary

\*) Presidents of the TC and ComCom are members of the extended CC and are reporting in that function to the president of the CC  
They should be invited to the CC meetings when TC and ComCom relevant topics are tackled

\*\*\*) Member of the CC but as well member of the TC or ComCom to ensure mandatory alignment between CC and Commissions



# Structure of SAS with CC, Foundations, Commissions and Sections



Central Committee - changes every 3 years

"Permanent roles" - position holders keep functions at least 6-8 years, changes when necessary

\*) Presidents of the TC and ComCom are members of the extended CC and are reporting in that function to the president of the CC  
They should be invited to the CC meetings when TC and ComCom relevant topics are tackled

\*\*\*) Member of the CC but as well member of the TC or ComCom to ensure mandatory alignment between CC and Commissions

November 2017